

Customer :

customer

Customer part :

customer part

Comment :

Comment

S1=2.48

S2=3.58

Tmax=458

Tp S2=497.0

PI=0.41

HI=121

Sample =1650.10

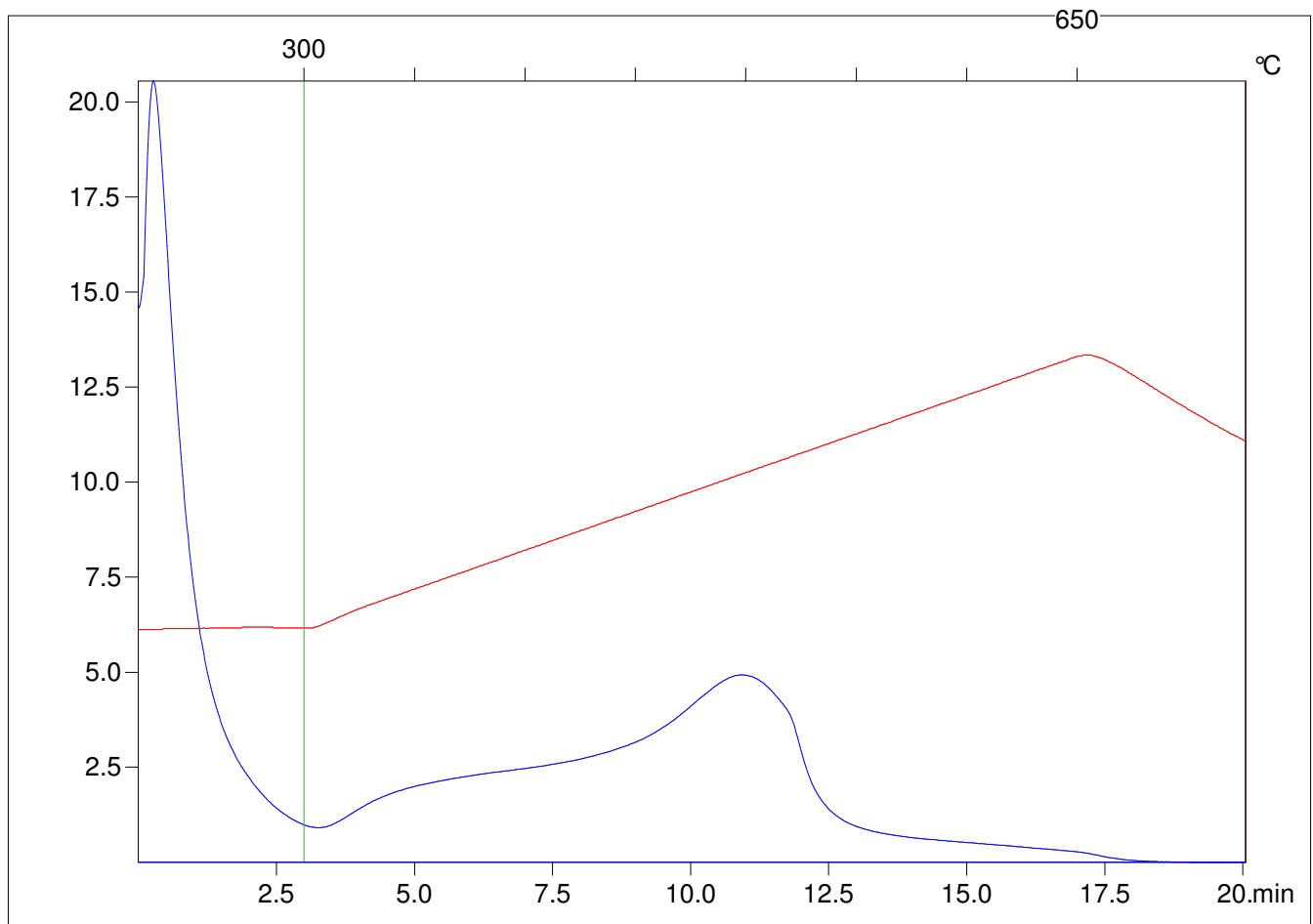
Method =Bulk Rock

Cycle=Basic

KFID(10*9)=1444

Qty =70.6

TOC=2.97



C:\VINCI\PK1792\PK064.R00 : FID pyrolysis graphic

State

Pyro Status

Oxi Status